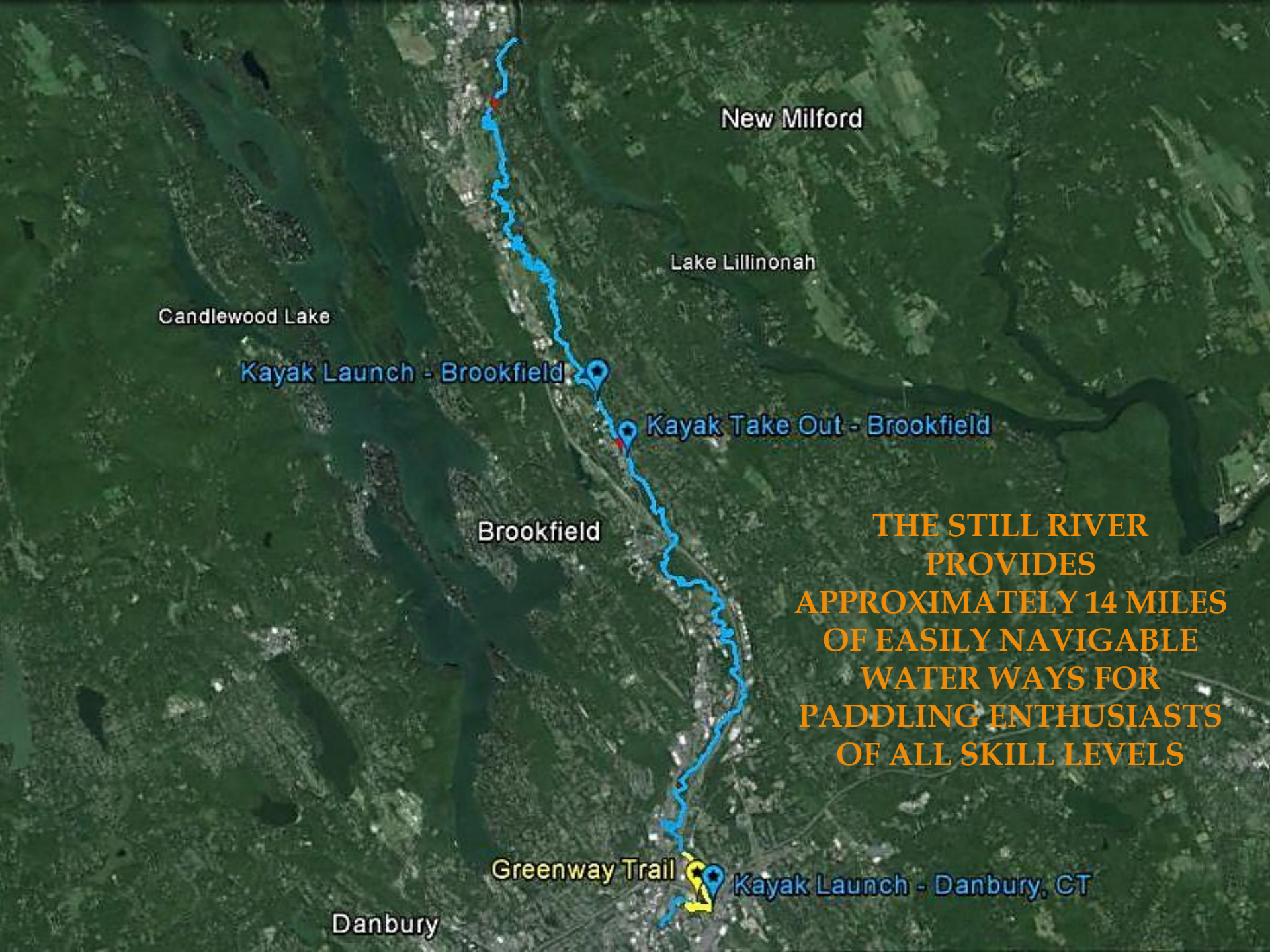


A scenic view of a river flowing through a dense forest. In the foreground, the back of a person in a blue kayak is visible, holding a yellow paddle. Further down the river, another person in a green kayak is seen. The water is calm, reflecting the surrounding greenery. The trees are tall and leafy, creating a canopy over the river. The text "PADDLING THE STILL RIVER" is overlaid in a stylized, orange, serif font.

PADDLING THE STILL RIVER



New Milford

Lake Lillinonah

Candlewood Lake

Kayak Launch - Brookfield

Kayak Take Out - Brookfield

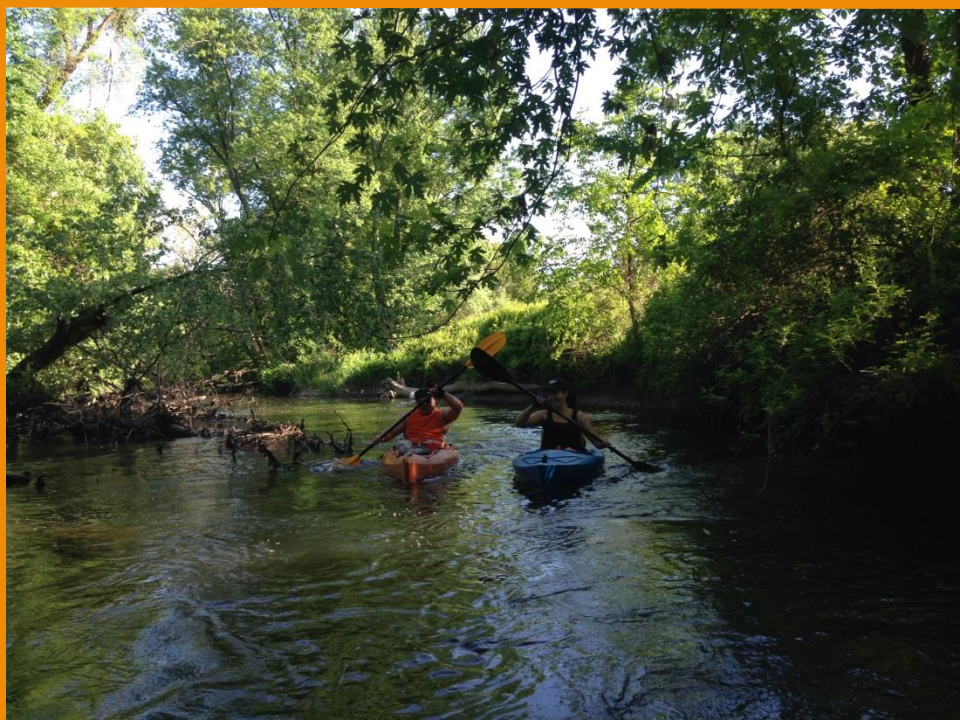
Brookfield

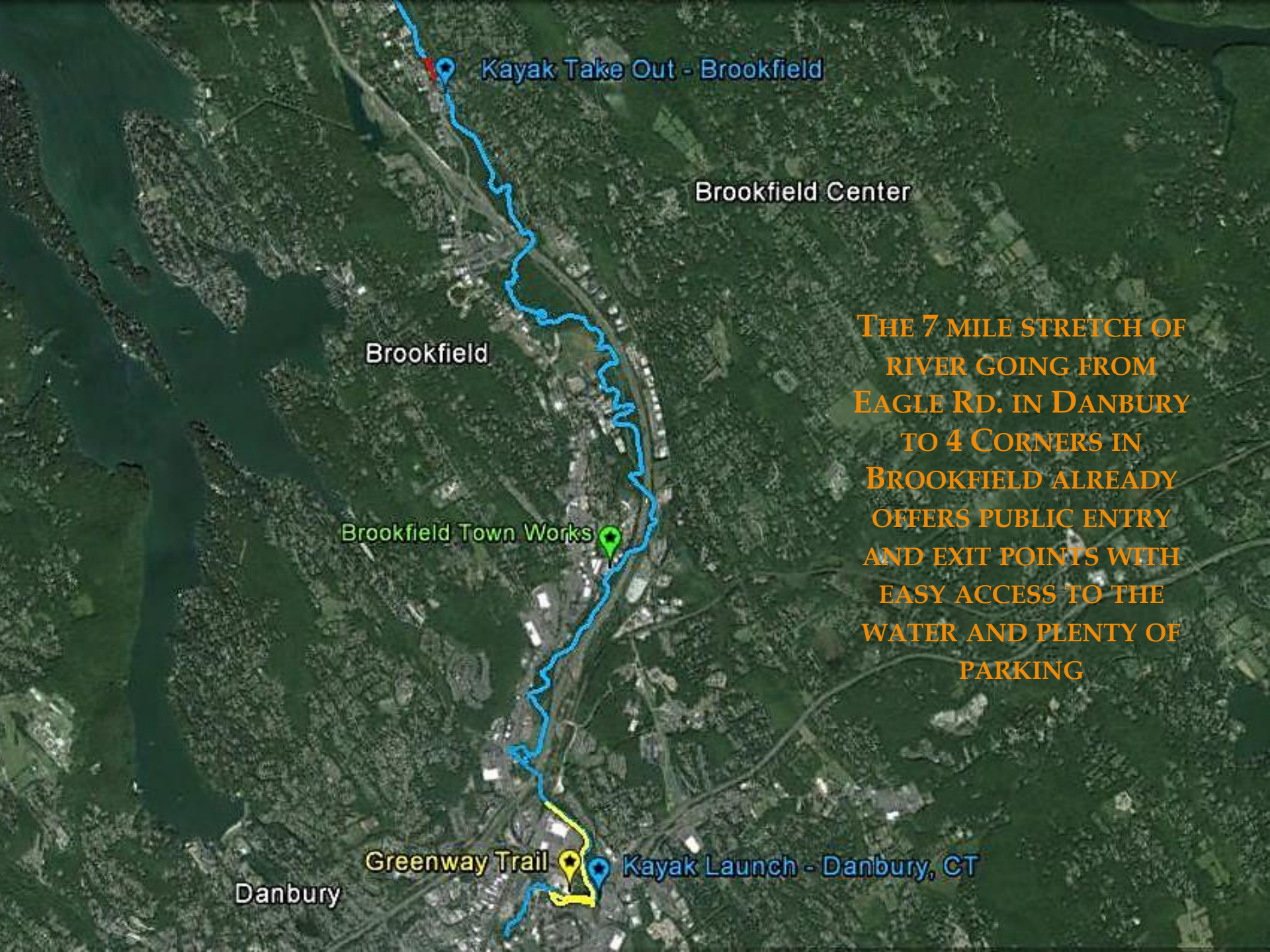
**THE STILL RIVER
PROVIDES
APPROXIMATELY 14 MILES
OF EASILY NAVIGABLE
WATERWAYS FOR
PADDLING ENTHUSIASTS
OF ALL SKILL LEVELS**

Greenway Trail

Kayak Launch - Danbury, CT

Danbury





Kayak Take Out - Brookfield

Brookfield Center

Brookfield

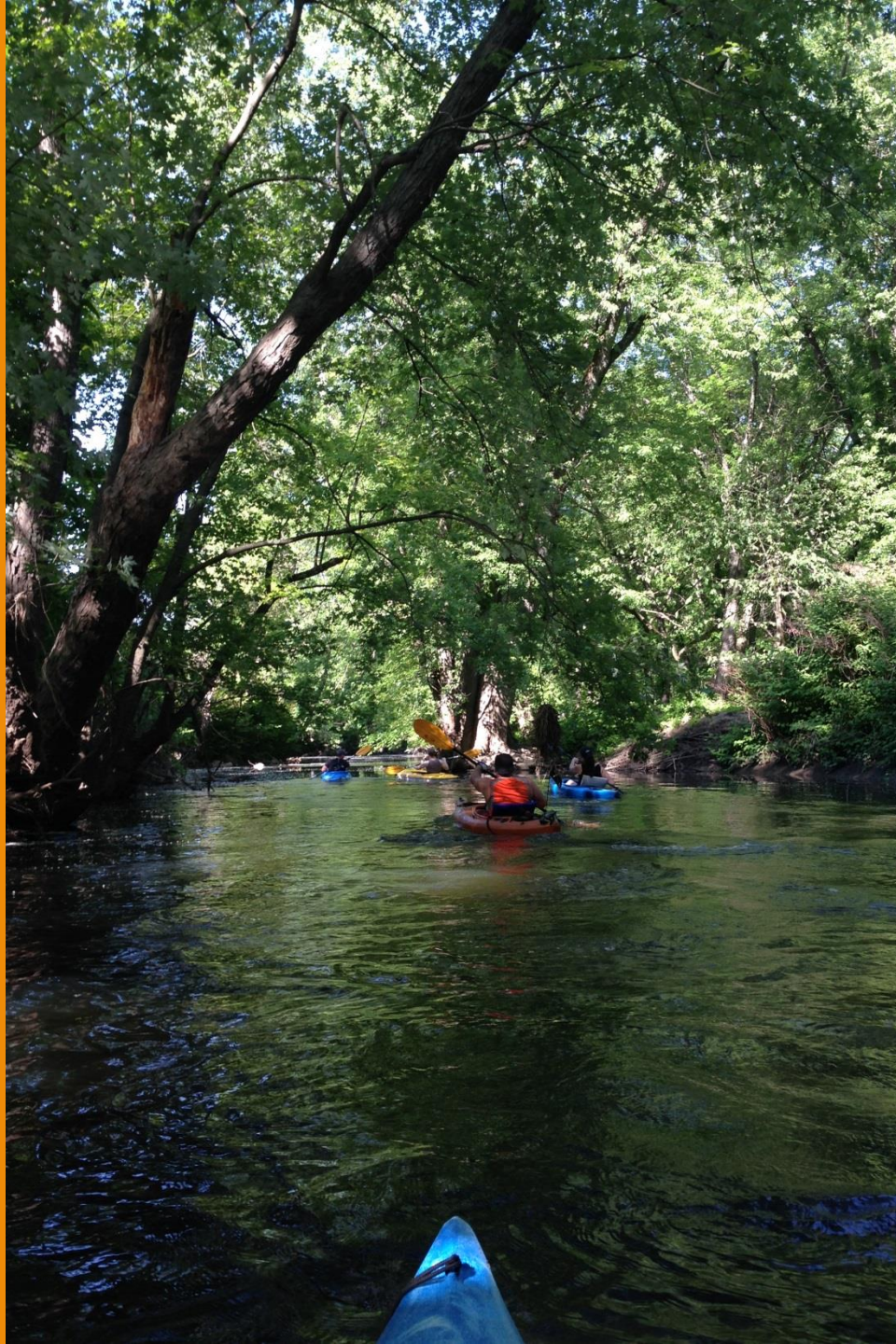
Brookfield Town Works

THE 7 MILE STRETCH OF
RIVER GOING FROM
EAGLE RD. IN DANBURY
TO 4 CORNERS IN
BROOKFIELD ALREADY
OFFERS PUBLIC ENTRY
AND EXIT POINTS WITH
EASY ACCESS TO THE
WATER AND PLENTY OF
PARKING

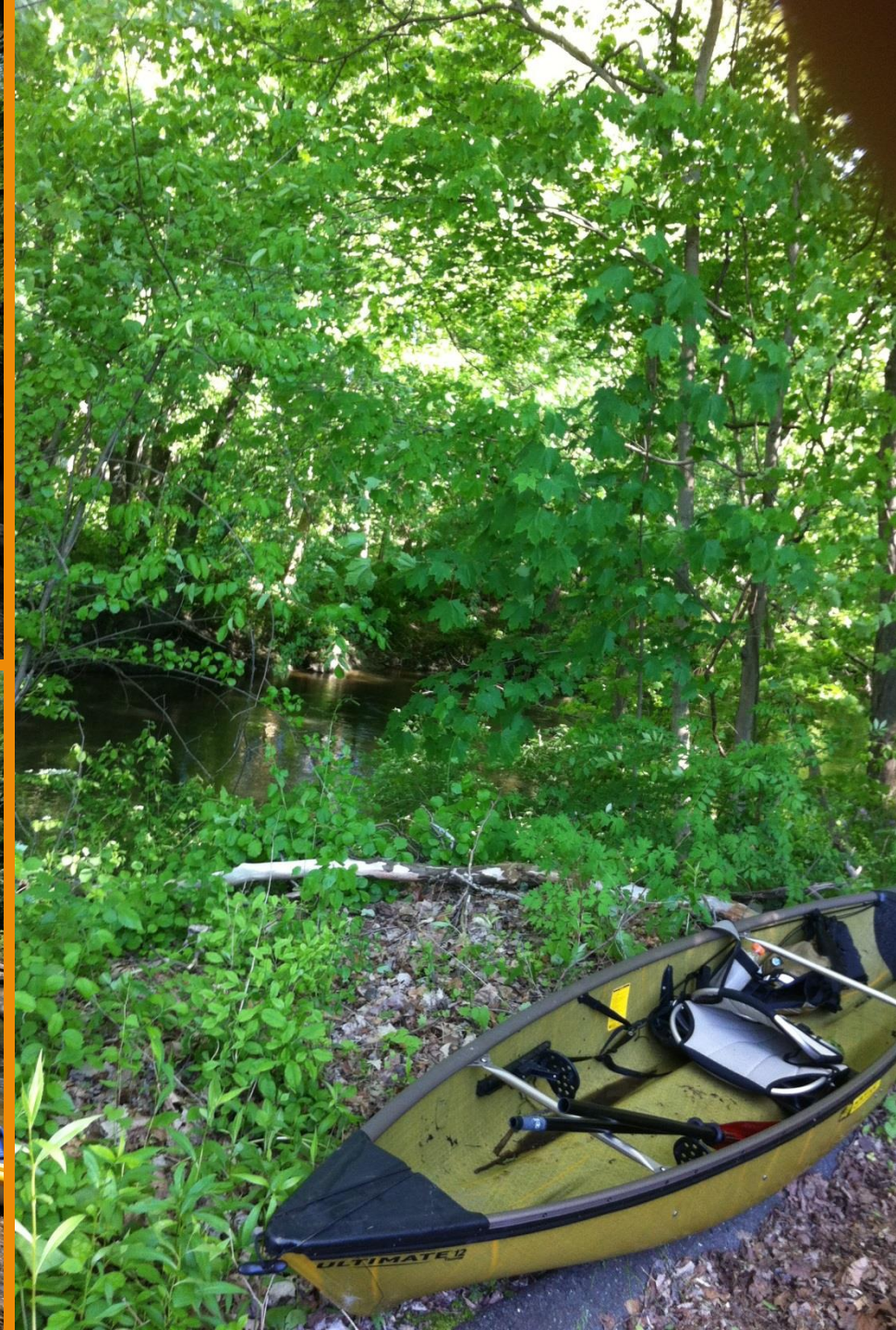
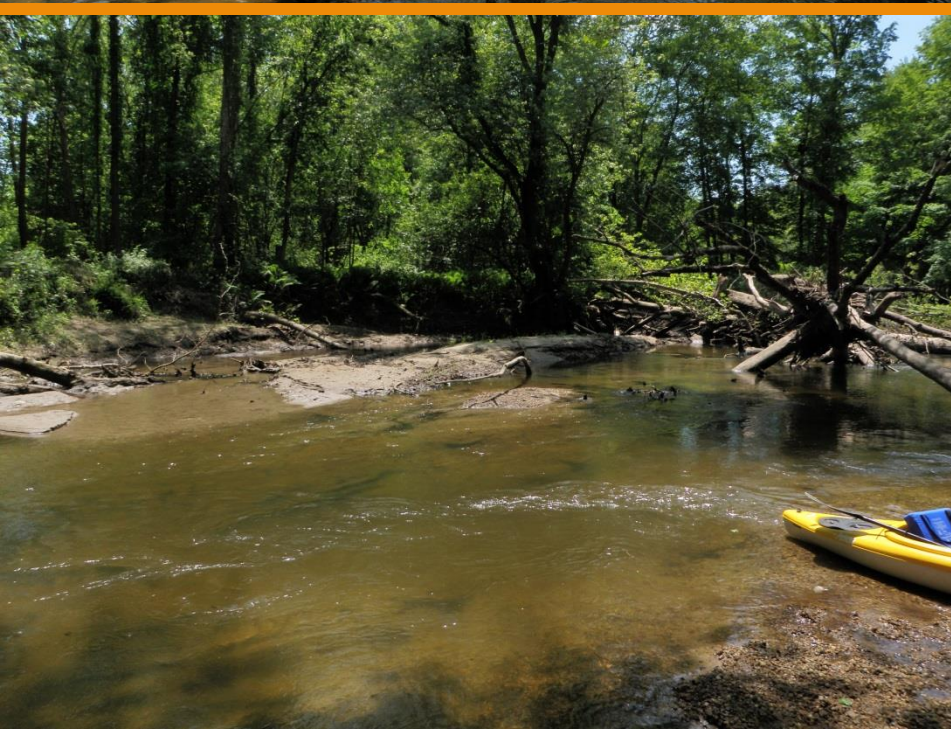
Greenway Trail

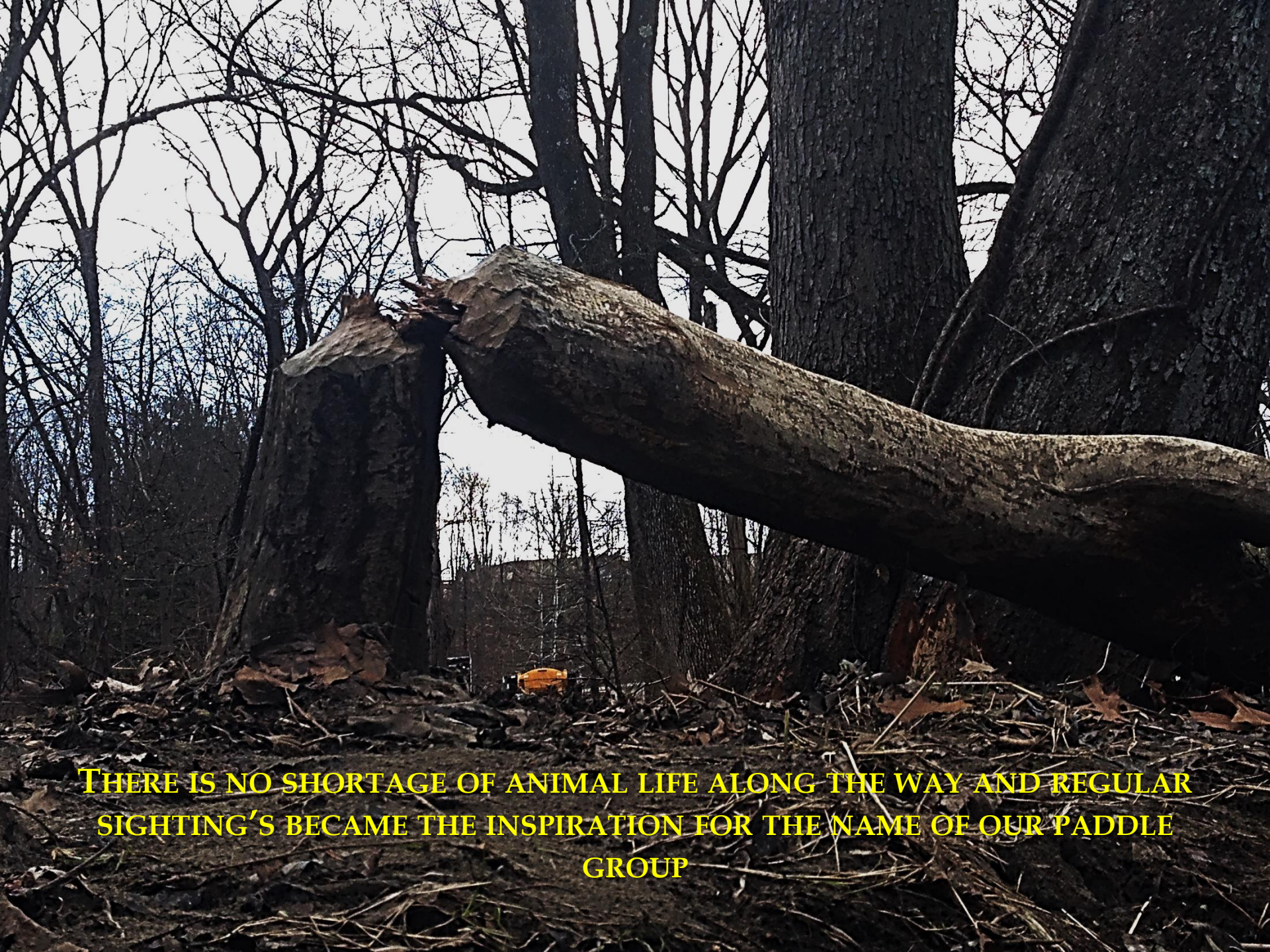
Kayak Launch - Danbury, CT

Danbury



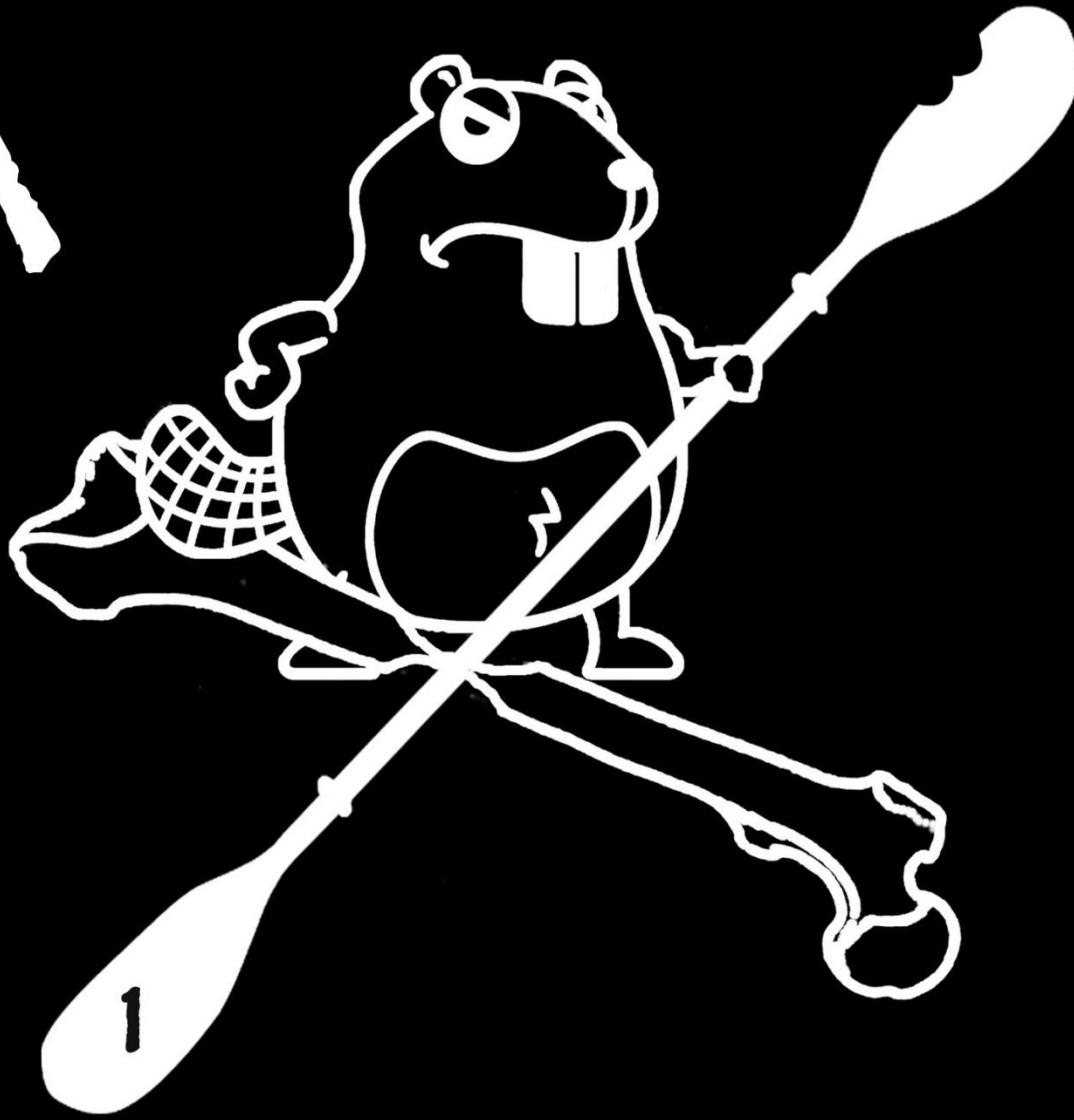







THERE IS NO SHORTAGE OF ANIMAL LIFE ALONG THE WAY AND REGULAR
SIGHTING'S BECAME THE INSPIRATION FOR THE NAME OF OUR PADDLE
GROUP

A



B

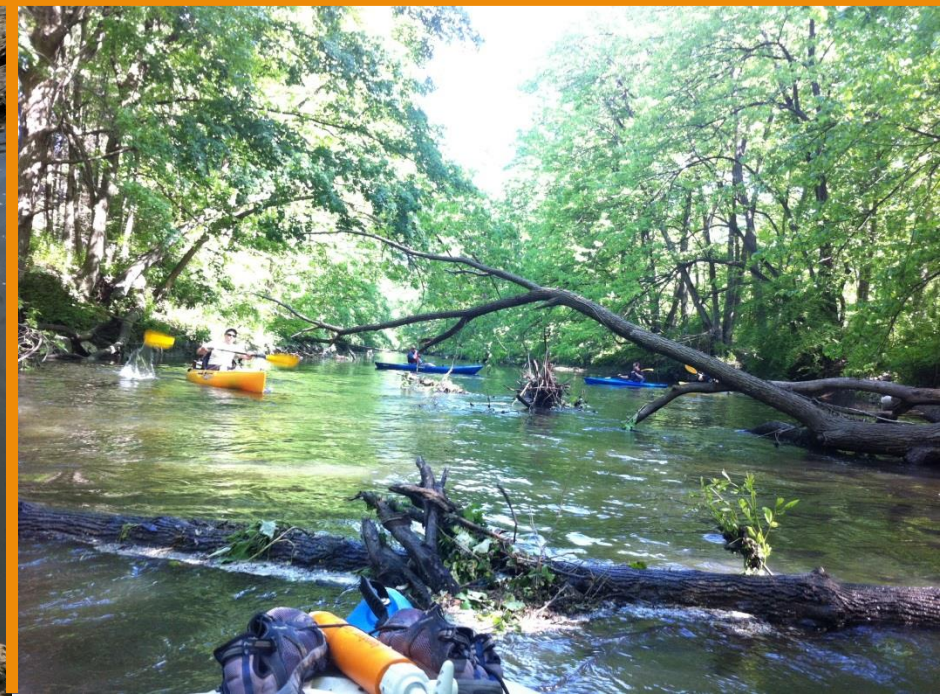
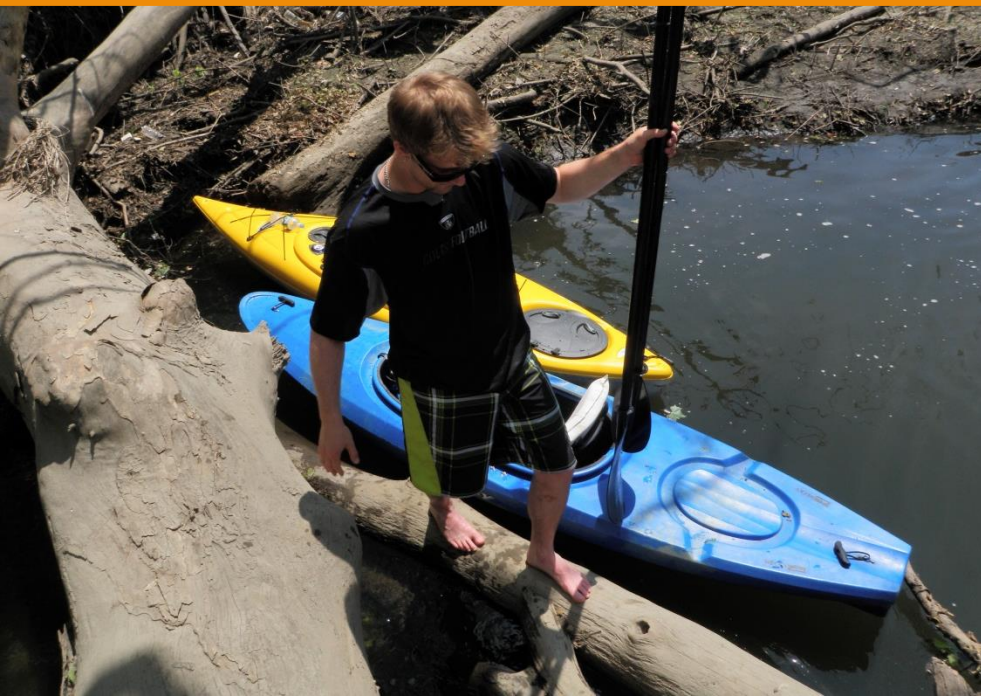
... THE ANGRY BEAVERS

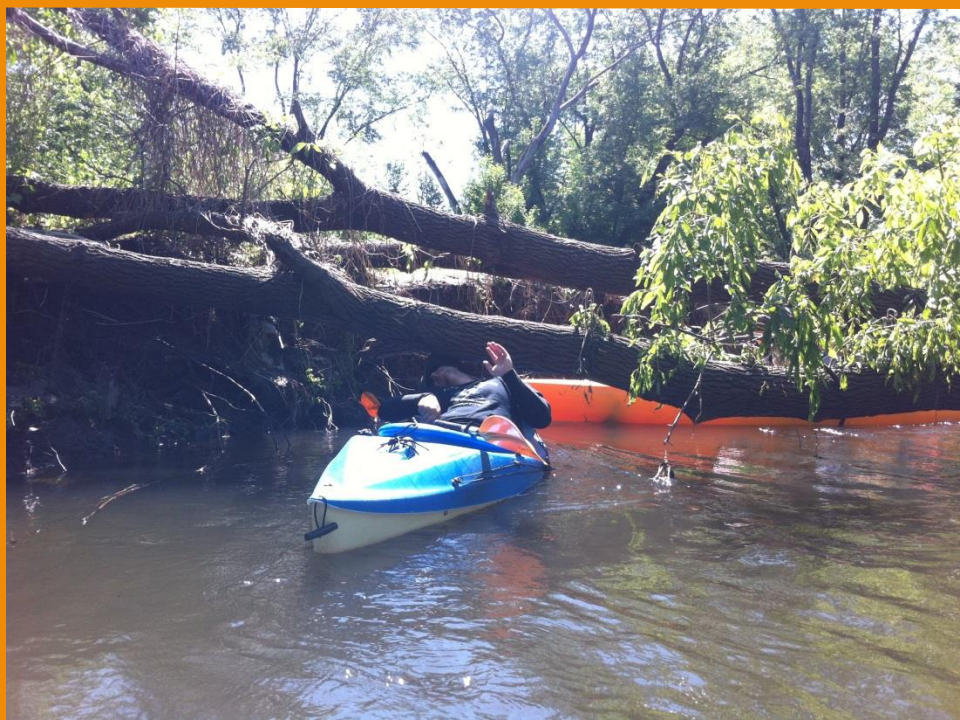
A first-person perspective from someone floating on a river. Their legs and feet are visible in the foreground, resting on a dark inflatable. The river is calm, reflecting the surrounding dense green forest. In the middle ground, two other people are in kayaks, one with an orange paddle. Sunlight filters through the trees, creating a dappled light effect on the water and foliage.

WHILE IT'S TRUE
THAT A DAY ON
THE STILL RIVER
CAN BE QUITE
RELAXING...



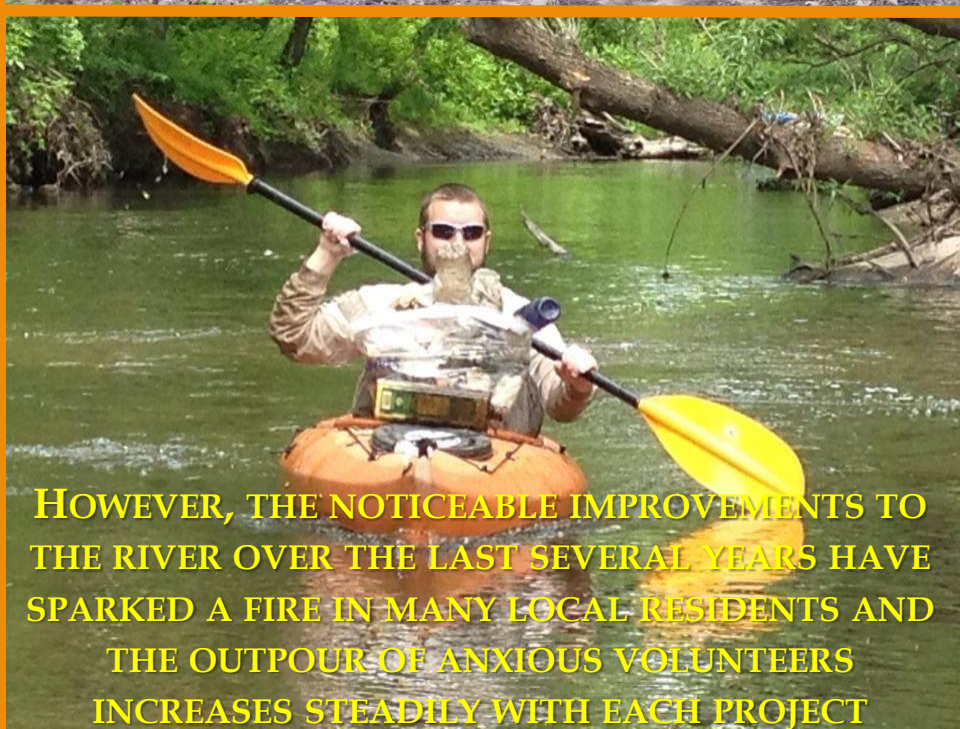
IT IS CERTAINLY NOT WITH OUT
ITS FARE SHARE OF OBSTACLES
AND CHALLENGES...



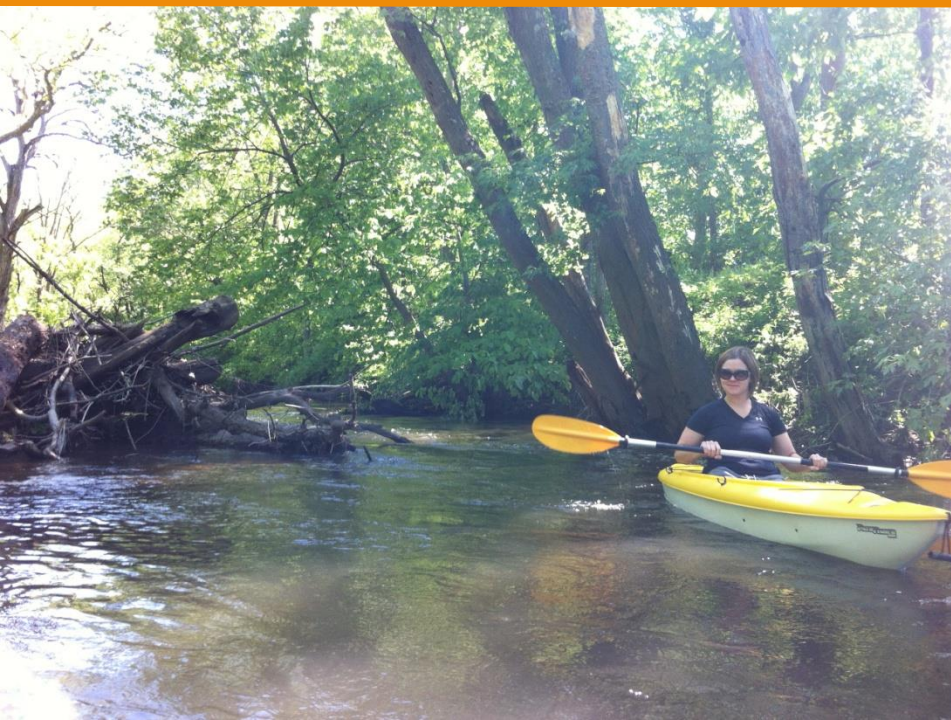


**ONE OF THE LARGEST
CHALLENGES WE STILL
FACE IS THE CARELESS
DUMPING OF TRASH
ALONG THE RIVER
BANKS**





HOWEVER, THE NOTICEABLE IMPROVEMENTS TO THE RIVER OVER THE LAST SEVERAL YEARS HAVE SPARKED A FIRE IN MANY LOCAL RESIDENTS AND THE OUTPOUR OF ANXIOUS VOLUNTEERS INCREASES STEADILY WITH EACH PROJECT







AN ANGRY BEAVER IS BORN!!!